

Pest aphids in New Zealand brassica crops

Main species of pest aphids in New Zealand brassica crops

Green peach aphid (*Myzus persicae*) (GPA); Cabbage grey aphid (*Brevicoryne brassicae*)



Myzus persicae (Green peach aphid) (GPA) nymphs



Myzus persicae (GPA) winged adult

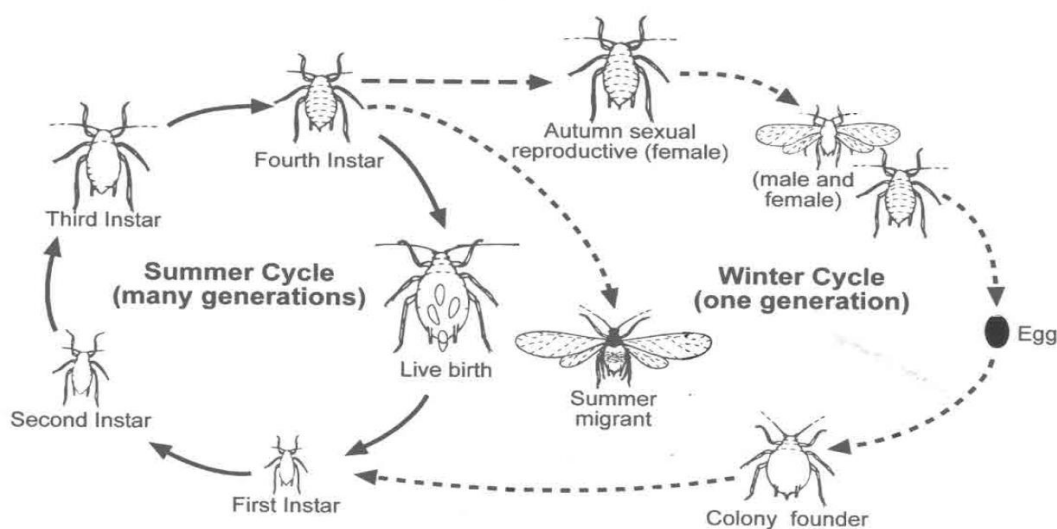


Brevicoryne brassicae (Cabbage grey aphid) nymphs



Brevicoryne brassicae (Cabbage grey aphid winged adult)

Life cycle of aphids



(Adapted with permission from UC Davis website)

Key beneficial insects

Naturally occurring predators and parasitoids of aphids in brassica crops



Tasmanian brown lacewing adult



Tasmanian brown lacewing larva



Hoverfly larva



11-spotted ladybird adult



11-spotted ladybird larva



Damsel bug adult



Harvestmen



Sheetweb spider



An *Aphidius* parasitoid aphid mummy

General information

- Two main species of aphid can be found in New Zealand brassica crops.
- Aphids feed by sucking plant juices, causing yellowing, wilting and curling of leaves.
- Aphids can vector viruses, including cauliflower mosaic virus, turnip mosaic virus and turnip yellows virus.
- Dense colonies may be seen on the plant's younger leaves and flowering parts.
- Aphids are most numerous on brassicas during late spring, summer and autumn.
- There are many predators and parasitoids of aphids.
- The fungal disease *Erynia neoaphidis* may cause mortality of aphid colonies in high humidity conditions.
- Use of selective/biological insecticides can be useful when enhancing beneficial insect populations.

DISCLAIMER

The New Zealand Institute for Plant and Food Research Limited does not give any prediction, warranty or assurance in relation to the accuracy of or fitness for any particular use or application of, any information or scientific or other result contained in this presentation. Neither The New Zealand Institute for Plant and Food Research Limited nor any of its employees, students, contractors, subcontractors or agents shall be liable for any cost (including legal costs), claim, liability, loss, damage, injury or the like, which may be suffered or incurred as a direct or indirect result of the reliance by any person on any information contained in this fact sheet.

COPYRIGHT

© COPYRIGHT (2024) The New Zealand Institute for Plant and Food Research Limited. All Rights Reserved. No part of this fact sheet may be reproduced, stored in a retrieval system, transmitted, reported, or copied in any form or by any means electronic, mechanical or otherwise, without the prior written permission of The New Zealand Institute for Plant and Food Research Limited. Information contained in this fact sheet is confidential and is not to be disclosed in any form to any party without the prior approval in writing of The New Zealand Institute for Plant and Food Research Limited. To request permission, write to: The Science Publication Office, The New Zealand Institute for Plant and Food Research Limited – Postal Address: Private Bag 92169, Victoria Street West, Auckland 1142, New Zealand; Email: SPO-Team@plantandfood.co.nz